



## Seguin Squirrel Trail GO NUTS!

The Seguin Commission on the Arts has developed the Squirrel Trail program to promote art in public places. Fiberglass squirrel statues will be painted and placed in public areas throughout the community. Businesses and individuals can purchase a squirrel at a cost of up to \$2,500, which includes the completed fiberglass squirrel, a concrete slab and a plaque recognizing the name of the artist and owner.

We are very excited to welcome you as a sponsor of Seguin Commission on the Arts' Squirrel Trail art project. You may already have an idea of the design/theme you want, or we are happy to provide ideas. Enclosed you will find the details of the program. We are happy to recommend local artists to you who can handle this project. We leave it up to you and the artist to work out fees and materials.

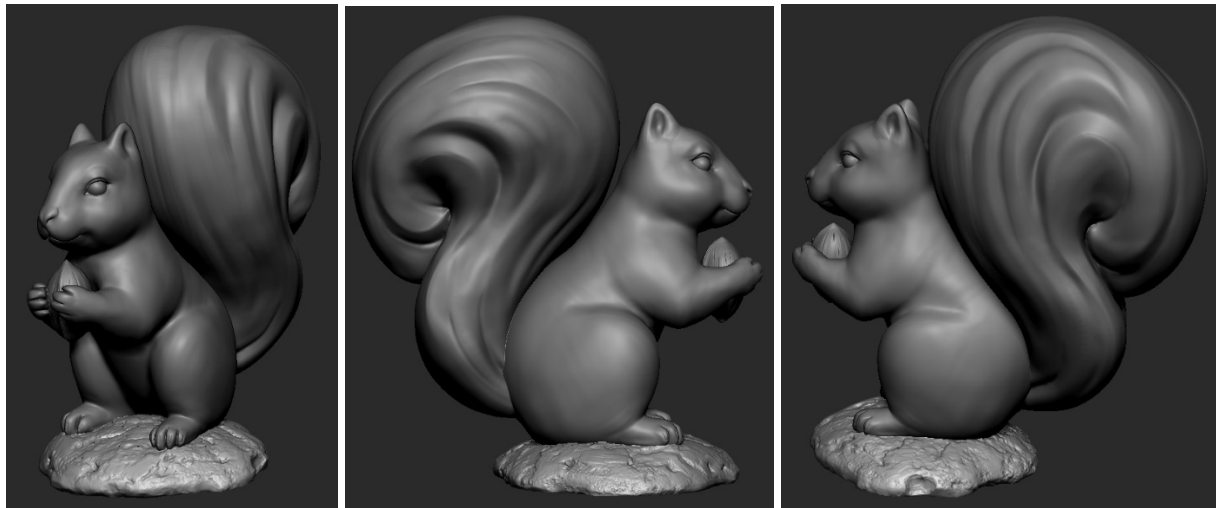
We also need to make certain that the designs will be appropriate for public display. The design will not allow any libel, slander, or social disrespect. Please remember that this is a public display, and all proposals must be appropriate for all audiences. Once your design is developed, the Commission will review for appropriateness.

Thank you so much for participating and helping us install public art around Seguin.

## Squirrel Sculpture Examples

Specs: Fiberglass sculpture, approximately 4 feet tall

Here are the initial renderings of our squirrel mold. Please note that there will be an 8" x 6" flat space for a plaque on the base.



## Project Cost

Up to \$2,500	Sponsorship includes squirrel statue, concrete base, plaque, and clear coat finish.*
\$500-\$1,500	Artist Fee negotiated with artist

\* If you would rather mount your sculpture on a large rock or other suitable base, we can remove the cost of the concrete base from your sponsorship fee.

## Guidelines

The Seguin Commission on the Arts requests approval of the concept in which the squirrel will be painted. This is solely to ensure that the squirrels are painted appropriately for public viewing of all ages. The City will also need to approve any contract with the artist so that the City can ensure that it will have the rights and artists' permission to maintain the sculpture.

Design concepts may promote the sponsoring business in an artistic way.

Once the squirrel sculpture is complete, the Commission will be responsible for any future maintenance. The Commission, in partnership with the City of Seguin Main Street & CVB department will develop a plan to promote the squirrels to locals and visitors.

### **PRIVATE PROPERTY**

Squirrels on private property should be placed in a publicly accessible location so visitors are able to view and find them. Our goal is to create a trail of squirrels that local and visitors can easily find and view.

Should the sponsoring business close, the Commission retains the right to move the sculpture to a new location within the City of Seguin.

### **PUBLIC PROPERTY**

Please review the suggested locations for squirrels on public property. All locations must be approved by the appropriate authorities and will be guided by the Main Street & CVB department.

Should a sponsoring business close or have to leave Seguin for any reason, the Commission will continue to maintain the sculpture as is unless the business elects to remove their name from said sculpture. In certain circumstances the City may request that the exiting business allow the City to move the sculpture to a new location.

## Squirrel Production Process

Once the Commission receives the Squirrel sculptures, the sponsor will be invoiced for the amount of up to \$2,500. Once paid in full, the sponsor may arrange to pick up the squirrel for painting.

Once painted, the squirrel must be returned to the Commission to get the clear coat auto finish.

The Commission will then get the concrete base ready for mounting, deliver and mount the squirrel in the sponsor's desired location.

A final plaque will be fixed to the squirrel upon completion recognizing the sponsor and artist.

## Suggested Locations in Seguin

Following are suggested locations for squirrel sculptures in Seguin public spaces. These locations require final approval by the City of Seguin and are available on a first come, first served basis.

- Seguin Public Library – 313 W. Nolte Street
- Max Starcke Park
  - Along river road by the golf course
  - Near the pavilions
- Park West
  - Along the walking trail
  - MTR Skatepark
- Sebastopol House
  - Outside the fence by the sign
- Manuel C. Castilla Park
- Golf Course Pro Shop
- Bauer Park
- Walnut Springs Walking Trail
- Central Park
- Seguin Events Complex

## Artist Suggestions

Below are several artists with the Seguin Art League that are willing and able to paint the fiberglass squirrel sculptures.

<u>Name</u>	<u>Email</u>	<u>Phone</u>
Kim Schmitt	<a href="mailto:kiminseguin@yahoo.com">kiminseguin@yahoo.com</a>	(830) 556-6544
Jenny Maxwell	<a href="mailto:jencrowe5@hotmail.com">jencrowe5@hotmail.com</a>	(720) 227-2924
Robin Walker	<a href="mailto:walker@walkerfortexas.com">walker@walkerfortexas.com</a>	
Liz Romero	<a href="mailto:Fleurromero@gmail.com">Fleurromero@gmail.com</a>	
Eilen Thedford	<a href="mailto:eilen@paintingsbyeilen.com">eilen@paintingsbyeilen.com</a>	(817) 368-4637
Holly Falkenberg	<a href="mailto:hollyfalkenberg@gmail.com">hollyfalkenberg@gmail.com</a>	(830) 822-1091
Kirsten Coelho Sultemeier	<a href="mailto:gruenemarines@gmail.com">gruenemarines@gmail.com</a>	

## Frequently Asked Questions

Q: We think it may be odd to place this in front of our office. Are there any other locations we might be able to place our squirrel?

A: Yes. We have developed a list of other locations around Seguin where we would like to see these squirrels. See page 4.

Q: Since they are made out of fiberglass, how long will they stay in place and looking good? Who will maintain the sculptures?

A: The Seguin Commission on the Arts will be responsible for any future maintenance. The final sculptures will be covered in a clear coat auto finish that should last a long time.

Q: Do we have to use one of your suggested artists?

A: No. If you know an artist or have someone on your team that wants to do the project, that's completely fine.

Should you have any other questions about the Squirrel Trail Art Program, please contact Blaire Friar, Main Street & CVB Assistant Director, [bfriar@seguintexas.gov](mailto:bfriar@seguintexas.gov) or (830) 401-2309.