

SAMPLE TYPICAL SECTIONS

R2



- One lane each direction
- Passing zone, where possible
- Shoulder & ditch drainage
- Approximate Right-of-Way = 80 feet

U2



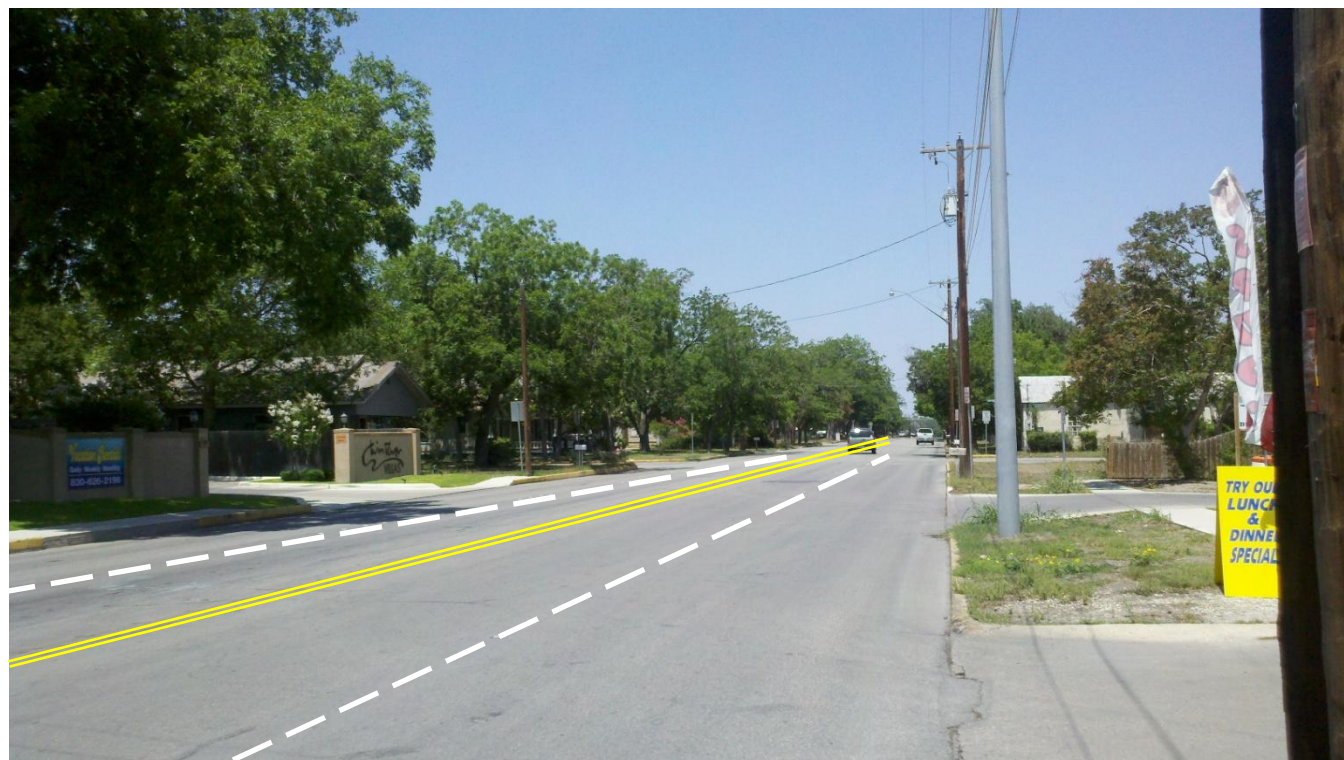
- One lane each direction
- Passing zone, where possible
- Curb & gutter drainage
- Approximate Right-of-Way = 60 feet

R4



- Two lanes each direction
- Double yellow striping separates opposing traffic
- Shoulder & ditch drainage
- Approximate Right-of-Way = 100 feet

U4



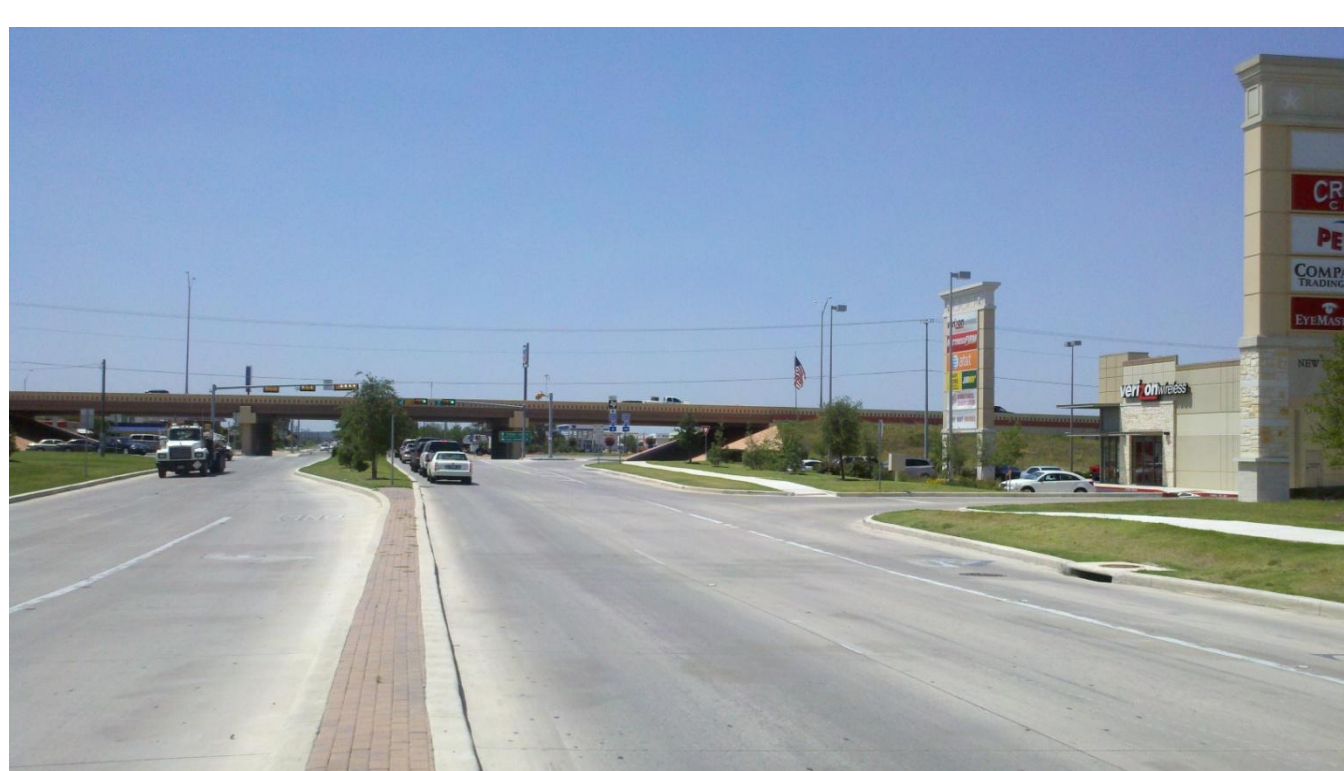
- Two lanes each direction
- Double yellow striping separates opposing traffic
- Curb & gutter drainage
- Approximate Right-of-Way = 90 feet

R4M



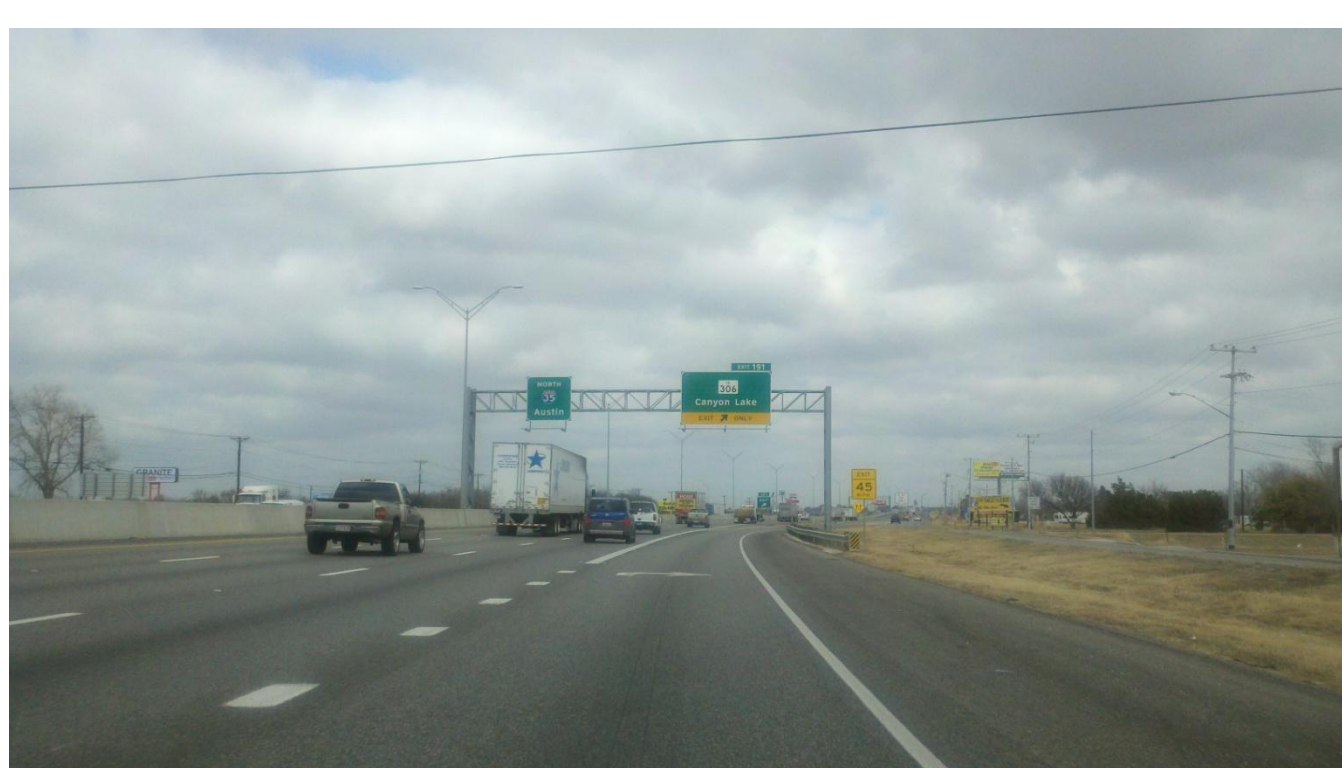
- Two lanes each direction
- Grass median with crossovers
- Shoulder & ditch drainage
- Approximate Right-of-Way = 140 feet

U4M



- Two lanes each direction
- Curbed median (grass/concrete) with crossovers
- Curb & gutter drainage
- Approximate Right-of-Way = 110 feet

R6F



- Three lanes each direction with interchange ramps
- Grass or barrier median; emergency crossovers only
- Shoulder & ditch drainage
- Approximate Right-of-Way = 150 feet + ramps

ADDITIONAL SAMPLE SECTIONS

R2 - TWLTL



- One lane each direction
- Two-way left turn lane for driveways
- Shoulder & ditch drainage
- Examples: Common Street (New Braunfels); Court Street (Seguin)

U2 - TWLTL



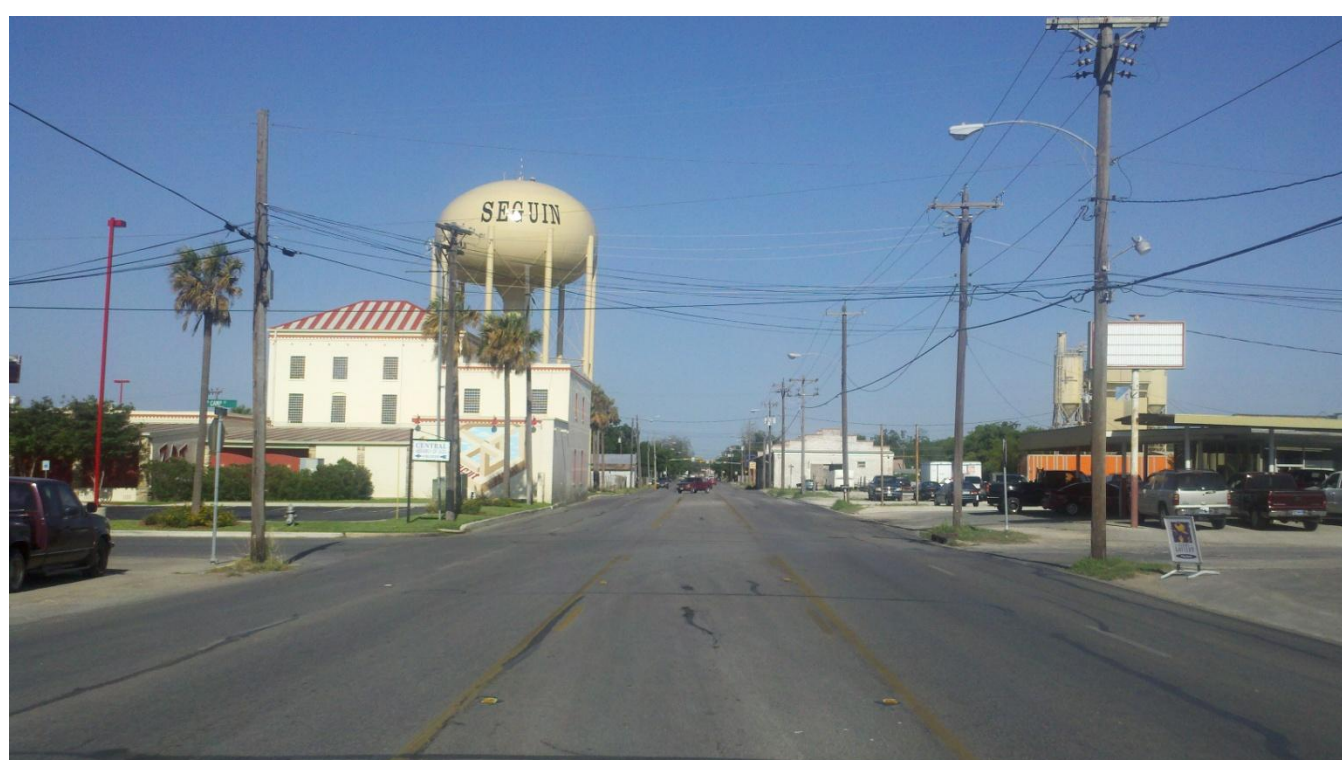
- One lane each direction
- Two-way left turn lane for driveways
- Curb & gutter drainage
- Example: Court Street (Seguin)

U2 - Parking



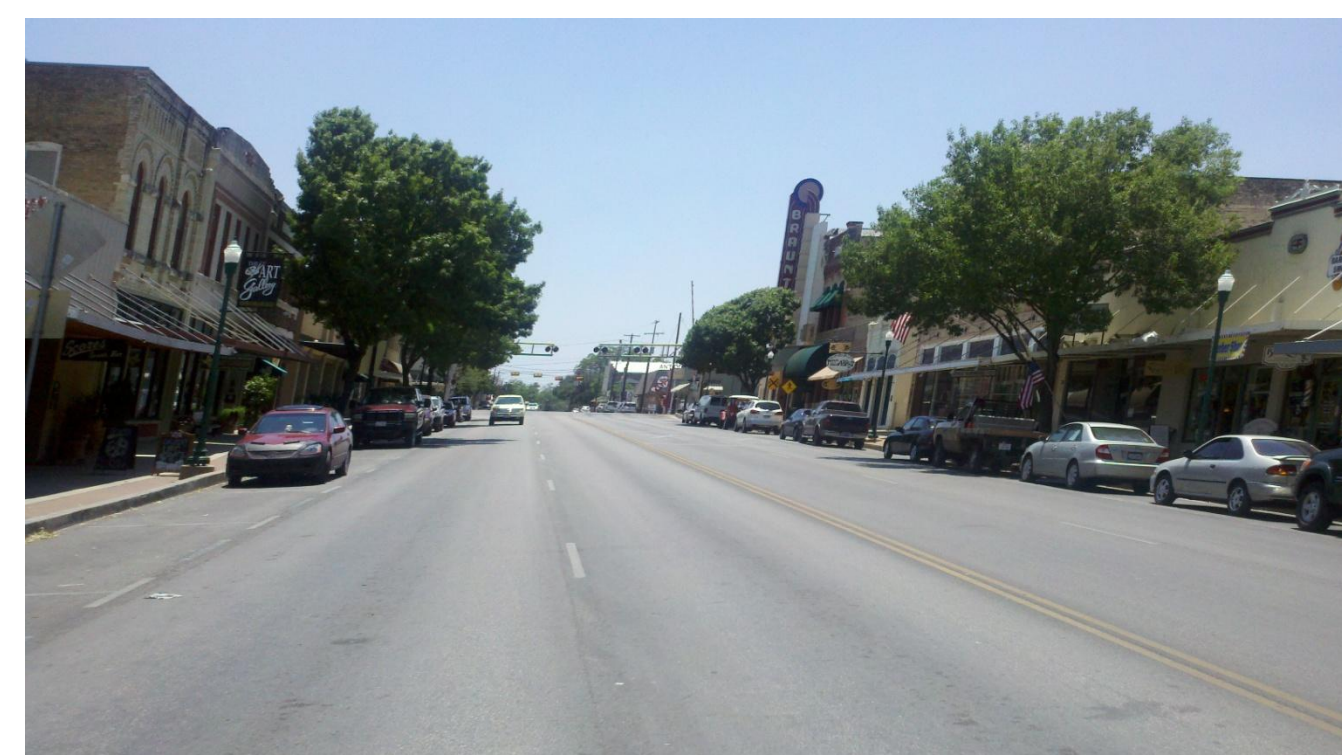
- One lane each direction
- On Street parking allowed
- Curb & gutter drainage
- Examples: Castell Avenue (New Braunfels); Landa Street (New Braunfels)

U4 - TWLTL



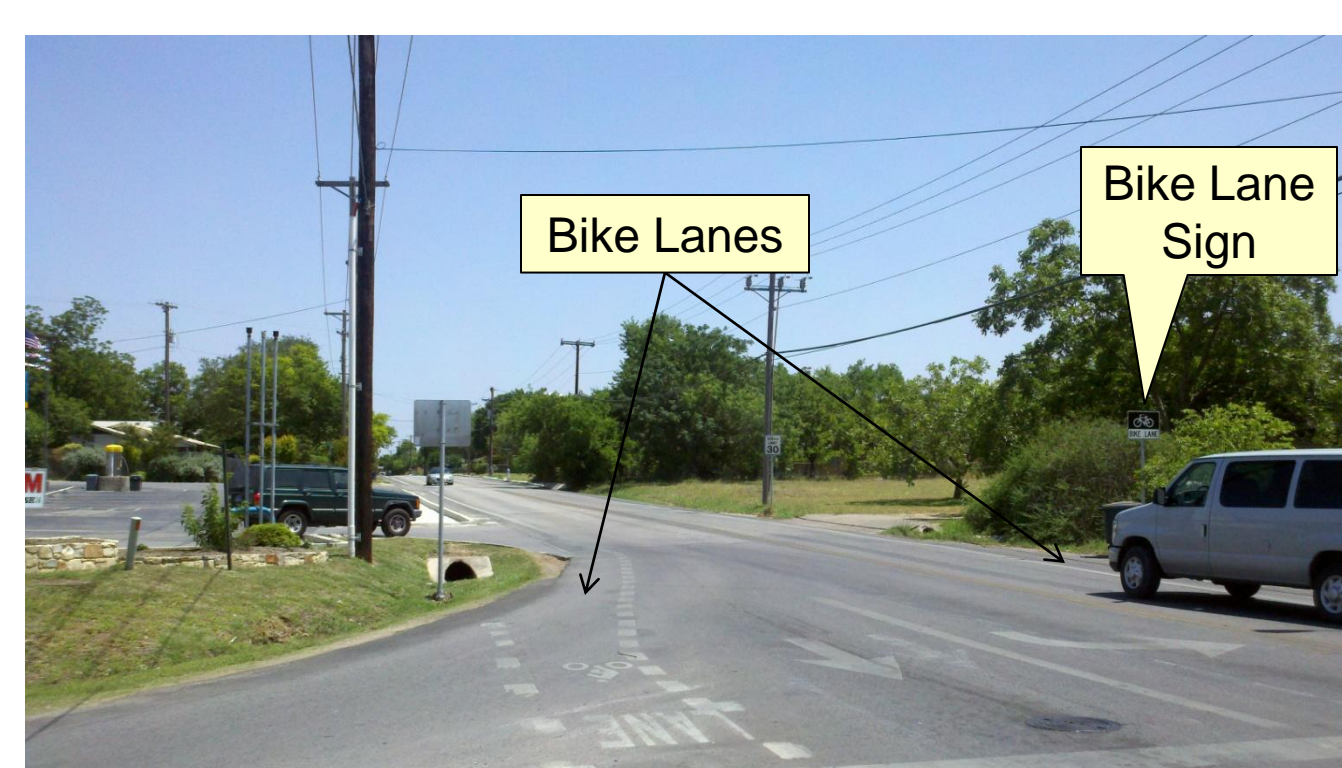
- Two lanes each direction
- Two-Way left turn lane for driveways
- Curb & gutter drainage
- Examples: Common Street (New Braunfels); Kingsbury Street (Seguin)

U4 - Parking



- Two lanes each direction
- On street parking allowed
- Curb & gutter drainage
- Examples: San Antonio Street (New Braunfels); Seguin Avenue (New Braunfels)

Bike Lanes



- one bike lane each direction
- Five feet or more wide (includes gutters)
- Regulatory signs for motorists
- Examples: Gruene Road (New Braunfels); Kingsbury Street (New Braunfels)

Austin- River Couplet



- Paved width and lane designations vary
- Parallel and angled parking areas
- Curb & gutter drainage
- Building setbacks vary